

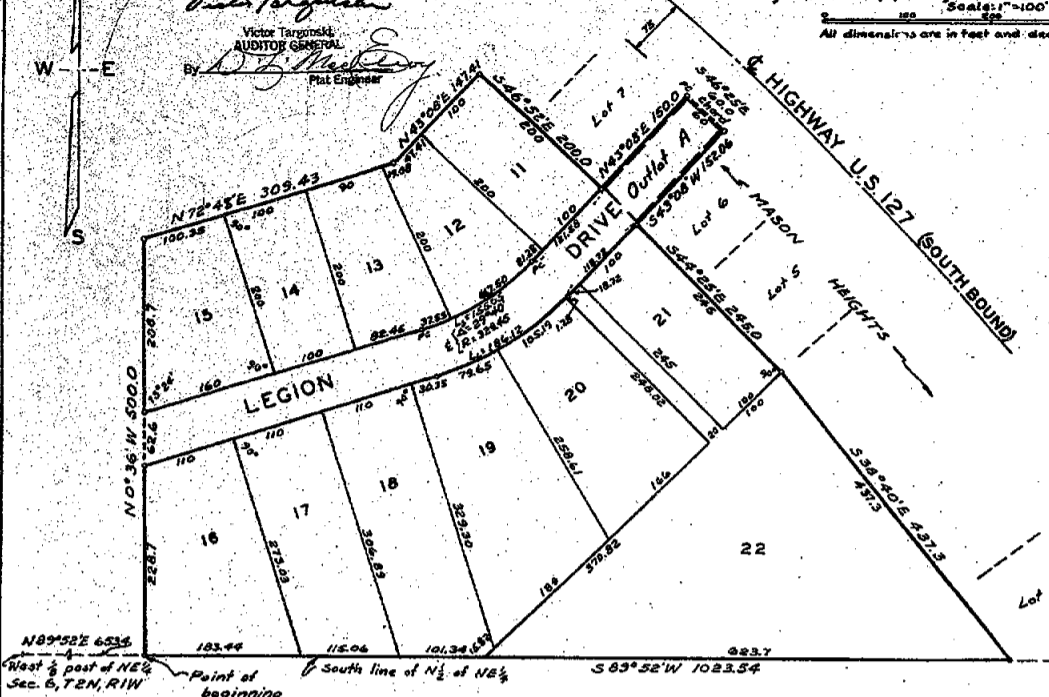
MASON HEIGHTS NO. 1

A subdivision on the North 1/2 of NE 1/4 of Section 6, T2N, R1W, Vevay Township, Ingham County, Michigan.

Scale: 1" = 100'
All dimensions are in feet and decimals thereof.

EXAMINED AND APPROVED
Date JUN 13 1955

Victor Targonski
Victor Targonski
AUDITOR GENERAL
By *D. J. Mackey*
D. J. Mackey
Plat Engineer



DEDICATION

KNOW ALL MEN BY THESE PRESENTS, that we, **John N. Angell and Josephine J. Angell, his wife**, as proprietors, have caused the land embraced in the annexed plat to be surveyed, laid out and plotted, to be known as **MASON HEIGHTS**, a subdivision on the North 1/2 of NE 1/4 of Section 6, T2N, R1W, Vevay Township, Ingham County, Michigan.

and that the streets and alleys as shown on said plat are hereby dedicated to the use of the public.

Signed and Sealed in the Presence of
John N. Angell (L.S.)
Josephine J. Angell (L.S.)
Nancy White (Witness)
Josephine J. Angell (L.S.)
Josephine J. Angell (L.S.)

ACKNOWLEDGMENT

STATE OF MICHIGAN
County of **INGHAM**
On this **31st** day of **December**, 1955, before me, a Notary Public in and for said County, personally came the above named **John N. Angell, Josephine J. Angell**, known to me to be the persons who executed the above dedication, and acknowledged the same to be their free act and deed.
Notary Public, **Ingham** County
My Commission expires **June 3, 1956**

DESCRIPTION OF LAND PLATED

The land embraced in the annexed plat of **MASON HEIGHTS NO. 1**, a subdivision on the North 1/2 of NE 1/4 of Section 6, T2N, R1W, Vevay Township, Ingham County, Michigan

is described as follows:
Beginning on the South line of N 1/2 of NE 1/4 of Sec. 6, T2N, R1W, Vevay Township, Ingham County, Michigan, at a point N 89° 52' E 853.4 ft. from the W. 1/8 post of said NE 1/4, thence N 0° 38' W 500.0 ft., thence N 72° 48' E 309.43 ft., thence N 43° 08' E. 147.41 ft., thence S 46° 52' E. 200.0 ft. along the Southwesterly line of lots 7 and 8 of MASON HEIGHTS, to the most Westerly corner of Outlet A, thence N 43° 08' E 150.0 ft., thence S 46° 25' E 60.0 ft. on the Southwesterly right of way of Highway US 127, thence S 43° 08' W 152.06 ft. to the most Southerly corner of said Outlet A, thence 44° 25' E 245.0 ft. and S 38° 40' E. 437.3 ft. to the SW corner of Lot 1 of said MASON HEIGHTS, thence S 89° 52' W 1023.54 ft. to the point of beginning, including a replat of Outlet A of MASON HEIGHTS, and containing lots 11 to 22, inclusive.

APPROVAL BY BOARD OF COUNTY ROAD COMMISSIONERS

This plat has been examined and was approved on the **31st** day of **December**, 1955, by the **Ingham** County Board of Road Commissioners:
Roy B. Moore (Chairman)
Ernest J. Danchel (Member)
Leroy B. Danchel (Member)
Ward Vicary (Member)

SURVEYOR'S CERTIFICATE

I hereby certify that the plat herein delineated is a correct one and that permanent metal monuments consisting of bars not less than one-half inch in diameter and 48 inches in length, or shorter bars of not less than one-half inch in diameter topped over each other at least 6 inches with an over-all length of not less than 48 inches, encased in a concrete cylinder of least 4 inches in diameter and 48 inches in depth have been placed at points marked thereon (C, R, etc.) as shown shown at all angles in the boundaries of the land plotted, at all the intersections of streets, intersections of alleys, or of streets and alleys, and at the intersections of streets and alleys with the boundaries of the plat as shown on said plat.

Clyde K. Stephens
Clyde K. Stephens
Registered Land Surveyor & Registered Professional Engineer

APPROVAL BY COUNTY PLAY BOARD

This plat was approved on the **20th** day of **January**, 1955, by the **Ingham** County Play Board

James White (County Clerk)
Ernest J. Danchel (County Treasurer)
Ernest J. Danchel (County Drain Commissioner)
Gerald L. Graham (County Drain Commissioner)

MUNICIPAL APPROVAL

This plat was approved by the **Ingham** Township Board of the **Ingham** Township of **Vevay** at a meeting held **Jan. 16, 1955**

Blanche A. Wheeler (Clerk)

COUNTY TREASURER'S CERTIFICATE

Office of County Treasurer, **Ingham** County.
I hereby certify that there are no tax liens or bills held by the State on the lands described herein, and that there are no tax liens or bills held by individuals on said lands, for the five years preceding the **30th** day of **January**, 1955 and that the taxes for said period of five years are all paid, as shown by the records of this office.

Laurence D. Parker (County Treasurer)

CERTIFICATE AS TO STATE TRUNK LINE OR FEDERAL AID ROADS

We hereby certify that said plat appears to include land located on a state trunk line or federal aid road.

Nancy White (Witness)
Ernest J. Danchel (County Treasurer)
Laurence D. Parker (County Treasurer)
Gerald L. Graham (County Drain Commissioner)

REGISTER OF DEEDS

Ingham County, Mich.
Received for Record this **21st** day of **December**, 1955, at **2** o'clock **PM** and recorded in Liber **18** at **183** on page **27**
Miss B. J. ...
Register of Deeds

APPROVED
Charles M. ...
CHARLES M. ...
STATE TREASURER

EXAMINED AND APPROVED

Date MAR 26 1954

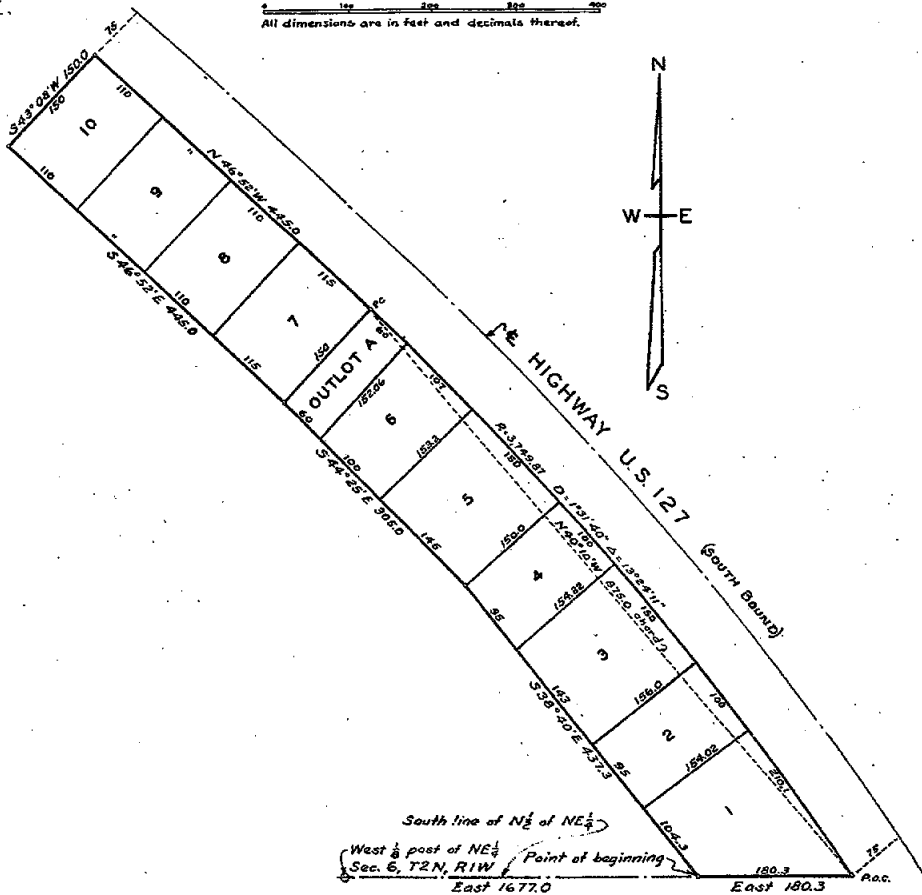
John B. Mehta
John S. Kurin,
Notary Public
By *[Signature]*
Notary

MASON HEIGHTS

A subdivision on the North 1/2 of NE 1/4 of Section 6, T2N, R1W,
Vevay Township, Ingham County, Michigan

Scale: 1"=100'

All dimensions are in feet and decimals thereof.



DEDICATION

KNOW ALL MEN BY THESE PRESENTS, that we, **John N. Angell and Josephine J. Angell, his wife and Emery D. Barr and Imogene D. Barr, his wife**, as proprietors, have caused the land embraced in the annexed plot to be surveyed, laid out and platted, to be known as **MASON HEIGHTS**, a subdivision on the North 1/2 of NE 1/4 of Section 6, T2N, R1W, Vevay Township, Ingham County, Michigan.

and that the streets and alleys as shown on said plat are hereby dedicated to the use of the public.

Signed and Sealed in the Presence of:
[Signatures of John N. Angell, Josephine J. Angell, Emery D. Barr, Imogene D. Barr]
[Signatures of Witnesses: James W. Barr, Harry Ambrose]

ACKNOWLEDGMENT

STATE OF MICHIGAN
 County of Ingham
 On this 17th day of December 1953, before me, a Notary Public in and for said County, personally came the above named **John N. Angell, Josephine J. Angell, Emery D. Barr and Imogene D. Barr**, known to me to be the persons who executed the above dedication, and acknowledged the same to be their free act and deed.

DESCRIPTION OF LAND PLATTED

The land embraced in the annexed plot of **MASON HEIGHTS**, a subdivision on the North 1/2 of NE 1/4 of Section 6, T2N, R1W, Vevay Township, Ingham County, Michigan.

is described as follows: Beginning on the South line of North 1/2 of NE 1/4 of Section 6, T2N, R1W, Vevay Township, Ingham County, Michigan, running thence East 180.3 feet to a point 75.0 feet from centerline of South bound highway U. S. 127, thence on the right of way of said highway Northwestwesterly 877.1 feet on a curve concave to the Southwest whose radius is 3,749.87 feet and whose long chord bears N 40° 10' W 375.0 feet to a point of tangency, thence N 45° 52' W 445.0 feet, thence S 43° 08' W 150.0 feet, thence S 46° 52' E 445.0 feet, thence S 44° 25' E 305.0 feet, thence S 38° 40' E 437.3 feet to the point of beginning.

APPROVAL BY BOARD OF COUNTY ROAD COMMISSIONERS

This plat has been examined and was approved on the 21st day of December, 1953 by the Ingham County Board of Road Commissioners.

[Signatures of Roy B. Moore (Chairman), Guy C. Hill (Member), Leroy D. Dunckel (Member)]

CERTIFICATE AS TO STATE TRUNK LINE OR FEDERAL AID ROADS

We hereby certify that said plat appears to include land located on a state trunk line or federal aid road.

[Signatures of C. Ross Hilliard, Laurence D. Parker, Gerald L. Graham]

SURVEYOR'S CERTIFICATE

I hereby certify that the plat hereon delineated is a correct one and that permanent metal monuments consisting of bars not less than one-half inch in diameter and 48 inches in length, or shorter bars of not less than one-half inch in diameter tapered over each other at least 4 inches with an over-all length of not less than 48 inches, secured in a concrete cylinder of least 4 inches in diameter and 48 inches in depth have been placed at points marked (R...) as thereon shown at all angles in the boundaries of the land platted, at all the intersections of streets, intersections of alleys, or of streets and alleys, and at the intersections of streets and alleys with the boundaries of the plot as shown on said plat.

[Signature of Clyde K. Stephens]
 Registered Land Surveyor & Registered Professional Engineer
 Clyde K. Stephens

APPROVAL BY COUNTY PLAT BOARD

This plat was approved on the 22nd day of January, 1954 by the County Plat Board.

[Signatures of County Clerk, County Treasurer, County Drain Commissioner]

MUNICIPAL APPROVAL

This plat was approved by the Township Board of the Township of Vevay of a meeting held on the 19th day of January, 1954.

[Signature of Blanche A. Wheeler (Clerk)]

COUNTY TREASURER'S CERTIFICATE

Office of County Treasurer, Ingham County. I hereby certify, that there are no tax liens or titles held by the State on the lands described hereon, and that there are no tax liens or titles held by individuals on said lands, for the five years preceding the 22nd day of January, 1954, and that the taxes for said period of five years are all paid, as shown by the records of this office.

[Signature of Laurence D. Parker (County Treasurer)]

APPROVED
[Signature of Charles M. Fisher]
 CHARLES M. FISHER
 STATE NOTARY PUBLIC