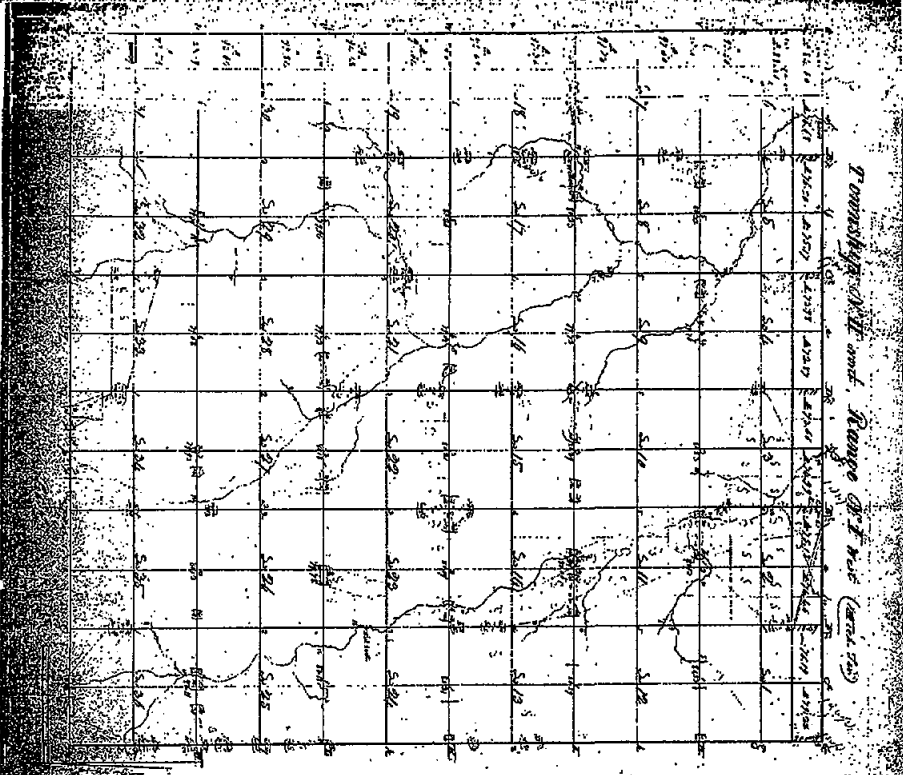


Township N. 11 north, R.

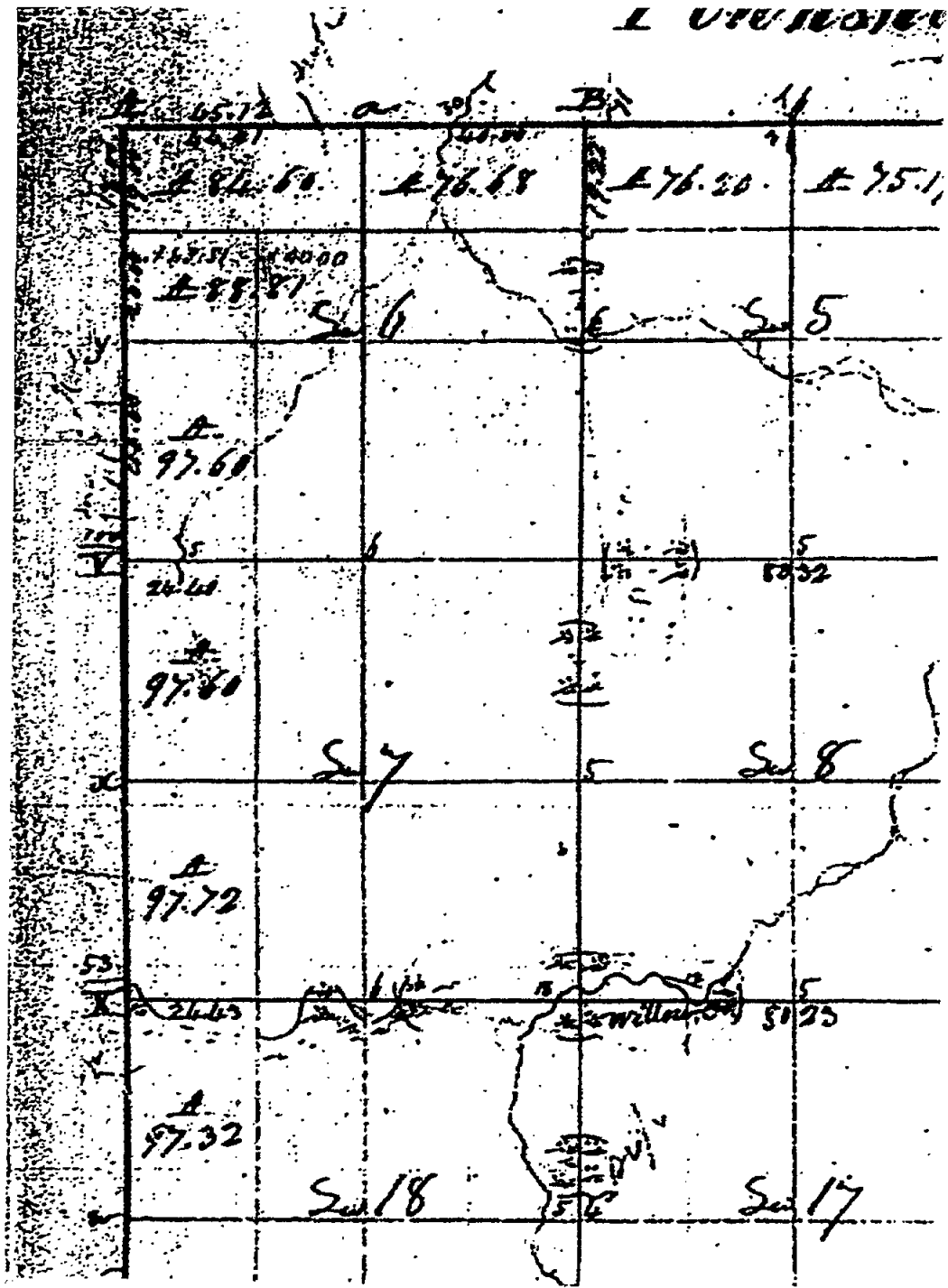
	A	B	C	D
17	45.12 44.91 A 84.60	40.00 A 76.68	A 75.17	A 70.99 A 72.87
18	A 88.81 A 97.60	Sec 6	Sec 5	Sec 4
19	24.40 A 97.60		8000	430 470
20	A 97.72	Sec 7	Sec 8	Sec 9
21	20.00 A 97.32	willow cut	8000	700
22	A 96.60	Sec 16	Sec 17	Sec 18
23	24.15 A 95.64		8000	700
24	A 94.68	Sec 19	Sec 20	Sec 21
25	23.48 A 93.84		8000	700
26	A 93.04	Sec 30	Sec 31	Sec 32
27	23.37 A 92.50		8000	700
28	A 93.48	Sec 31	Sec 32	Sec 33



5-36

Section	Area	Value	Total
1	36.00	1.00	36.00
2	36.00	1.00	72.00
3	36.00	1.00	108.00
4	36.00	1.00	144.00
5	36.00	1.00	180.00
6	36.00	1.00	216.00
7	36.00	1.00	252.00
8	36.00	1.00	288.00
9	36.00	1.00	324.00
10	36.00	1.00	360.00
11	36.00	1.00	396.00
12	36.00	1.00	432.00
13	36.00	1.00	468.00
14	36.00	1.00	504.00
15	36.00	1.00	540.00
16	36.00	1.00	576.00
17	36.00	1.00	612.00
18	36.00	1.00	648.00
19	36.00	1.00	684.00
20	36.00	1.00	720.00
21	36.00	1.00	756.00
22	36.00	1.00	792.00
23	36.00	1.00	828.00
24	36.00	1.00	864.00
25	36.00	1.00	900.00
26	36.00	1.00	936.00
27	36.00	1.00	972.00
28	36.00	1.00	1008.00
29	36.00	1.00	1044.00
30	36.00	1.00	1080.00
31	36.00	1.00	1116.00
32	36.00	1.00	1152.00
33	36.00	1.00	1188.00
34	36.00	1.00	1224.00
35	36.00	1.00	1260.00
36	36.00	1.00	1296.00
37	36.00	1.00	1332.00
38	36.00	1.00	1368.00
39	36.00	1.00	1404.00
40	36.00	1.00	1440.00
41	36.00	1.00	1476.00
42	36.00	1.00	1512.00
43	36.00	1.00	1548.00
44	36.00	1.00	1584.00
45	36.00	1.00	1620.00
46	36.00	1.00	1656.00
47	36.00	1.00	1692.00
48	36.00	1.00	1728.00
49	36.00	1.00	1764.00
50	36.00	1.00	1800.00
51	36.00	1.00	1836.00
52	36.00	1.00	1872.00
53	36.00	1.00	1908.00
54	36.00	1.00	1944.00
55	36.00	1.00	1980.00
56	36.00	1.00	2016.00
57	36.00	1.00	2052.00
58	36.00	1.00	2088.00
59	36.00	1.00	2124.00
60	36.00	1.00	2160.00
61	36.00	1.00	2196.00
62	36.00	1.00	2232.00
63	36.00	1.00	2268.00
64	36.00	1.00	2304.00
65	36.00	1.00	2340.00
66	36.00	1.00	2376.00
67	36.00	1.00	2412.00
68	36.00	1.00	2448.00
69	36.00	1.00	2484.00
70	36.00	1.00	2520.00
71	36.00	1.00	2556.00
72	36.00	1.00	2592.00
73	36.00	1.00	2628.00
74	36.00	1.00	2664.00
75	36.00	1.00	2700.00
76	36.00	1.00	2736.00
77	36.00	1.00	2772.00
78	36.00	1.00	2808.00
79	36.00	1.00	2844.00
80	36.00	1.00	2880.00
81	36.00	1.00	2916.00
82	36.00	1.00	2952.00
83	36.00	1.00	2988.00
84	36.00	1.00	3024.00
85	36.00	1.00	3060.00
86	36.00	1.00	3096.00
87	36.00	1.00	3132.00
88	36.00	1.00	3168.00
89	36.00	1.00	3204.00
90	36.00	1.00	3240.00
91	36.00	1.00	3276.00
92	36.00	1.00	3312.00
93	36.00	1.00	3348.00
94	36.00	1.00	3384.00
95	36.00	1.00	3420.00
96	36.00	1.00	3456.00
97	36.00	1.00	3492.00
98	36.00	1.00	3528.00
99	36.00	1.00	3564.00
100	36.00	1.00	3600.00

5-36

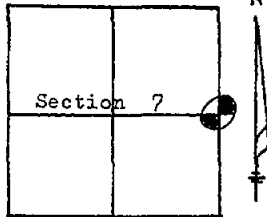


Form 280
(Rev. 3/60)

GOV'T. MONUMENT WITNESSES RECORD

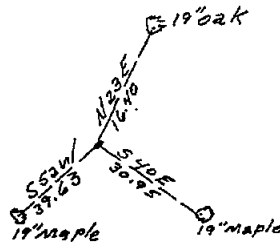
T. 2N R. 1 W 33032 C

SEC. NO. 7



DESCRIPTION
 Found Iron rod in center of Sitts road for 1/4 corner of sections 7-8 Vevay TWP Ingham County.

WITNESSES
 19" Oak N 23 E 16.40
 19" Maple S 40 E 30.95
 19" Maple S 52 W 39.63



MICHIGAN STATE HIGHWAY DEPARTMENT

C.E. Smith
SURVEY CHIEF

Sept. 1962

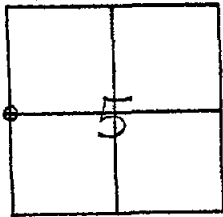
DATE C-4

Form 280
(Rev. 3/60)

GOV'T. MONUMENT WITNESSES RECORD

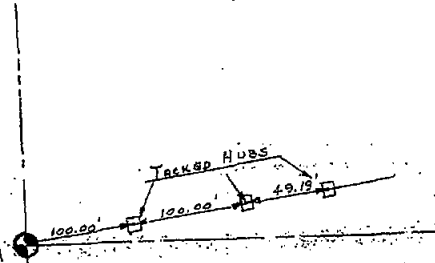
T. 2N R. 1 W

SEC. NO. 5



DESCRIPTION Ingham Co.
 VEVAY TWP.
 WEST 1/4 COR. SEC. 5
 3/4" PIPE

WITNESSES
 1/4 Cor.



MICHIGAN STATE HIGHWAY DEPARTMENT

KENNETH EMMONS
SURVEY CHIEF

12-17-65

DATE C-2 17

C. Y. ...