

N02°26'37"W 2651.55'

S02°15'39"E 2239.19'

S89°23'17"W 2632.54'

N89°32'37"E 2682.43'

S89°59'47"W 2683.71'

2671.81'

S01°22'04"E 2643.13'

N02°33'05"W 2221.02'

N90°00'00"W 2683.07'

2671.81'

S01°52'00"E 2631.69'

S02°13'42"E 2200.92'

N89°19'24"E 2681.16'

N89°36'44"W 2654.60'

SEC 1  
T3N R1E

TRAVERSE OF SEC'S 2&1 BY LEBBS

GPS OF SEC'S 25 & 26 BY LEBOY

M

M

2

110

103

102

100

27  
26

116

300

302

105

303

111

112

113

101

20

21

24  
25

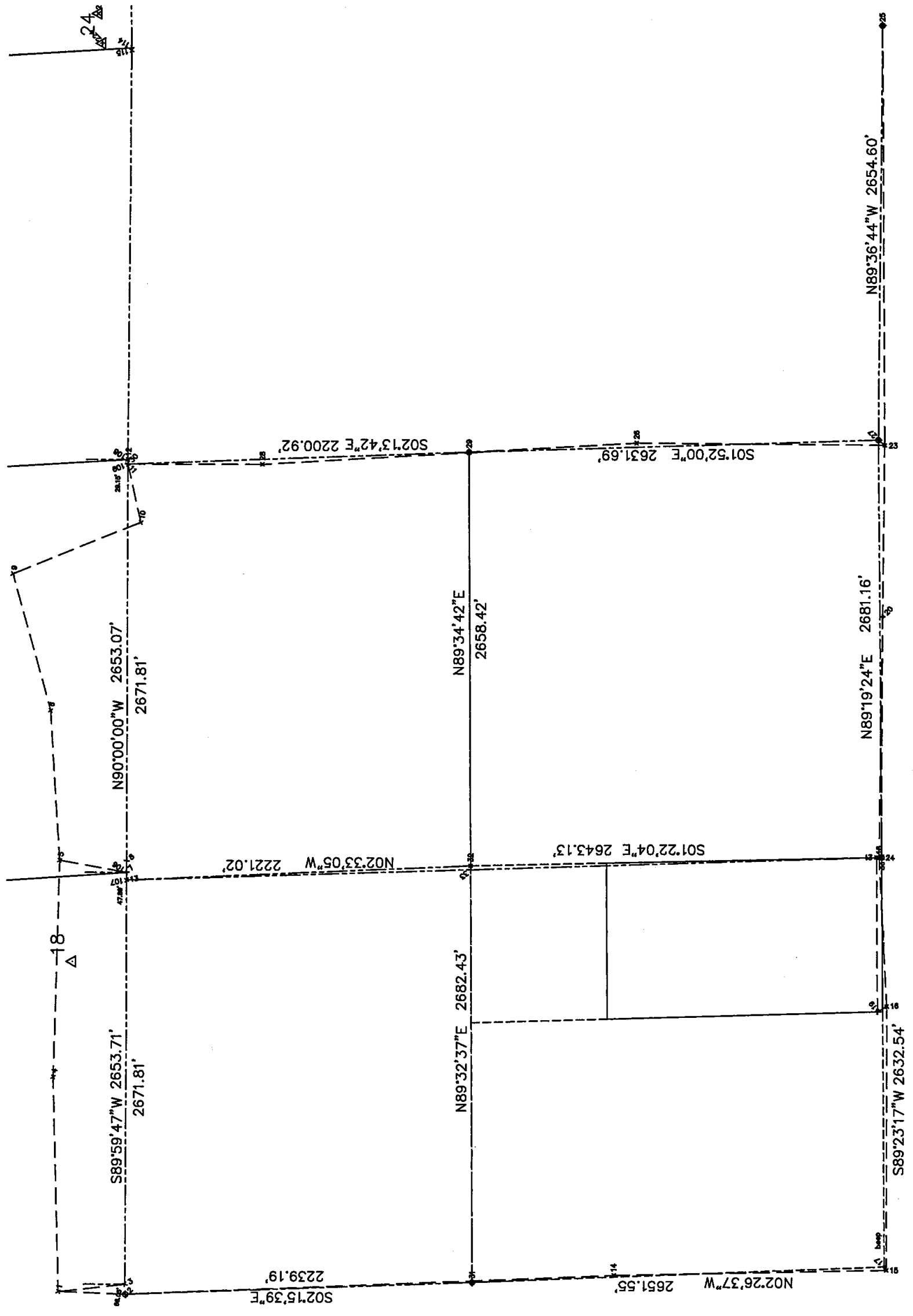
18

ABC

2

6

6



Point Listing made Wed Nov 10 10:18:35 2004

Page 1 of 2

Drawing Name: 73095w  
 Project Name: dwg  
 Project Path: I:\73\73095\dwg\  
 Username: abumstead

Number	Northing	Easting	Elevation	Raw Desc	Full Desc
1	6017.1369	4985.2113	.	TP1	TP1
2	5583.6003	4969.0736	.	I-1	I-1
3	5586.1752	5035.0766	.	I-13	I-13
4	6057.1924	6376.7700	.	TP4	TP4
5	6019.4547	7766.3316	.	TP5	TP5
6	6081.4492	8729.7440	.	TP6	TP6
7	5586.3438	7688.7812	.	J-13	J-13
8	5586.3838	7764.7432	.	B&C #8068	B&C #8068
9	6327.9418	9604.6075	.	TP9	TP9
10	5501.7953	9938.0086	.	TP10	TP10
11	5586.3438	10312.6999	.	K-1	K-1
12	5586.3438	10341.8499	.	K-13	K-13
13	5586.3407	7640.8857	.	J-1	J-1
14	2432.2334	5106.6301	0.00	WF2-31-14	WF2-31-14
15	683.5890	5148.2614	0.00	WF2-31-15	WF2-31-15
16	688.2285	6847.9750	0.00	WF2-32-16	WF2-32-16
17	696.3407	5170.4364	0.00	WF2-32-17	WF2-32-17
18	741.5715	7800.6328	0.00	WF2-33-18	WF2-33-18
19	747.9802	6814.3361	0.00	WF2-33-19	WF2-33-19
20	726.6318	9351.4508	0.00	WF2-34-20	WF2-34-20
21	757.9986	7802.6466	0.00	WF2-34-21	WF2-34-21
22	725.0371	7803.1168	0.00	WF2-34-22	WF2-34-22
23	715.6838	10451.3763	0.00	WF2-35-23	WF2-35-23
24	725.0401	7802.9516	0.00	WF2-35-24	WF2-35-24-J-
25	738.8334	13138.3616	0.00	WF2-36-25	WF2-36-25-L-
26	2308.2506	10459.9774	0.00	WF2-36-26	WF2-36-26
27	756.7959	10483.8253	0.00	WF2-36-27	WF2-36-27-K-
28	4718.5205	10314.2711	0.00	WF2-37-28	WF2-37-28
29	3387.0877	10398.1025	0.00	WF2-37-29	WF2-37-29-K-
30	5586.3437	10312.5249	0.00	WF2-29-11	WF2-29-11-K-
31	3346.2534	5057.3029	0.00	WF2-31-31	WF2-31-31-I-
32	3367.5187	7739.7524	0.00	WF2-32-J-2	WF2-32-J-2
33	3366.5229	7714.8451	0.00	INT. OF 1/4	INT. OF 1/4
34	5597.6110	15627.5727	0.00	dp location	dp location
100	10873.3727	15332.2990	0.00		
101	10859.3933	15333.2672	0.00		
102	10845.1303	12665.1857	4.00	SEC-COR	SEC-COR
103	10834.6456	10000.9815	866.70	SEC-COR	SEC-COR
105	8210.1794	10178.9923	0.00	E 1/4 COR	E 1/4 COR
106	5586.3438	7688.8453	861.94	FD REBAR W/	FD REBAR W/
107	5586.2132	7641.0492	862.53	FD REMON #:	FD REMON #30
108	5586.3438	10341.7858	0.00	FD SMASHED	FD SMASHED 3,
109	5586.7930	10312.6454	0.00	FD REMON #:	FD REMON #30
110	10822.1967	7331.0140	883.03	SEC-COR	SEC-COR
111	8220.9507	12831.7128	878.81	SEC-COR	SEC-COR
112	8236.1069	15482.5210	885.22	SEC-COR	SEC-COR
113	8226.8120	15482.3451	885.03	SEC-COR	SEC-COR
114	5571.8003	12989.6589	0.00	FD 1" PIPE	FD 1" PIPE II
115	5571.8581	12974.8752	0.00	FD REMON #:	FD REMON #30
116	8197.8858	4846.4590	0.00	W 1/4 COR	W 1/4 COR
117	5594.1551	15625.7969	0.00	FD REMON #:	FD REMON #30
201	6887.0375	10350.2310	862.62	TRAV-PT	TRAV-PT
202	10325.5406	11772.4107	887.15	TRAV-PT	TRAV-PT
220	10762.3998	15423.8296	883.38	TRAV-PT	TRAV-PT
221	10509.0910	15321.2233	881.04	TRAV-PT	TRAV-PT
222	6607.0775	10303.0077	866.07	TRAV-PT	TRAV-PT
223	6844.0998	10244.5136	863.01	TRAV-PT	TRAV-PT
224	5759.3005	13019.7535	874.95	TRAV-PT	TRAV-PT
225	5785.6737	13214.1283	871.72	TRAV-PT	TRAV-PT

Point Listing made Wed Nov 10 10:18:35 2004

Page 2 of 2

Number	Northing	Easting	Elevation	Raw Desc	Full Desc
226	7943.0022	4764.5872	859.77	TRAV-PT	TRAV-PT
227	7967.7949	4516.8840	864.34	TRAV-PT	TRAV-PT
300	8204.0262	7509.9463	0.00	CENTER CAL	CENTER CALC
302	8221.4344	7508.4022	0.00	CALC CENTE	CALC CENTER 1
303	8223.1224	12826.5204	0.00	calc 1/4 i	calc 1/4 int
2018	86.5270	-544.3970	865.14	TRAV-PT	TRAV-PT





PROJECT	COUNTY	SECTION	DATE
M-43	JINGHAM	33-10	3/30/82

LOCKE TWP.  
T4N-R2E  
S 1/2-SW Fract. 1/4  
Sec. 31

WILLIAMSTOWN TWP.  
T4N-R1E  
Gov't Lot 1  
Sec. 36

WILLIAMSTOWN TWP.  
T4N-R1E  
Gov't Lot 2  
Sec. 36

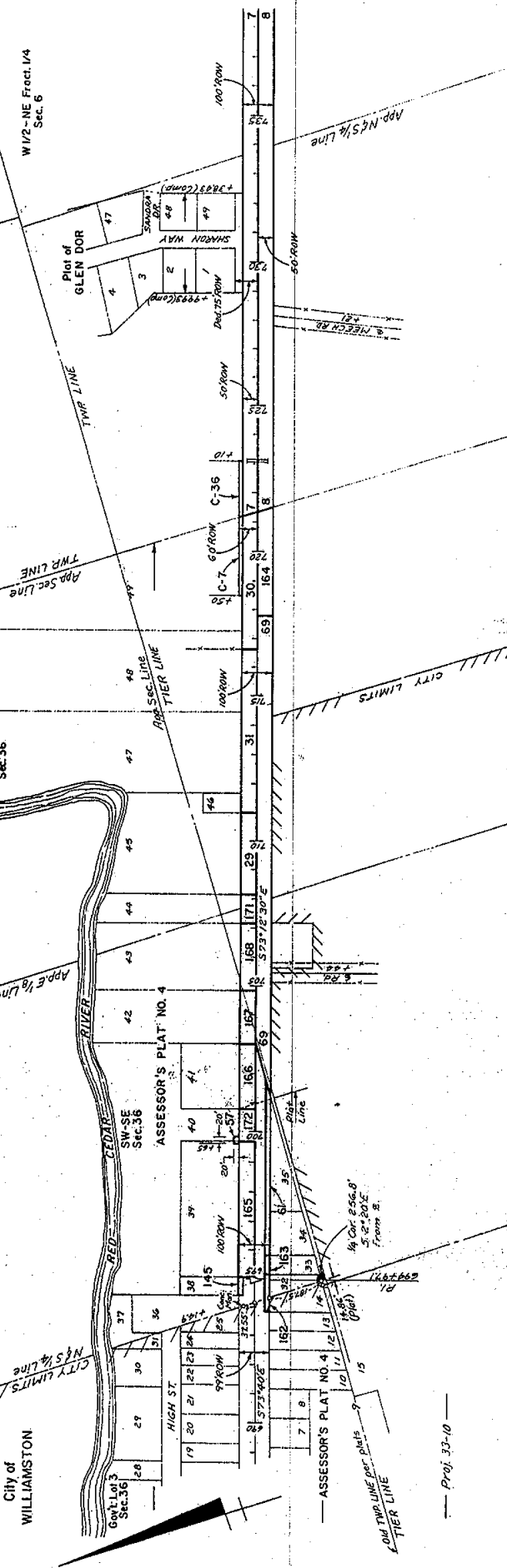
WILLIAMSTOWN TWP.  
T4N-R1E  
Gov't Lot 3  
Sec. 36

WILLIAMSTOWN TWP.  
T4N-R1E  
Gov't Lot 4  
Sec. 36

WILLIAMSTOWN TWP.  
T4N-R1E  
Gov't Lot 5  
Sec. 36

WILLIAMSTOWN TWP.  
T4N-R1E  
Gov't Lot 6  
Sec. 36

WILLIAMSTOWN TWP.  
T4N-R1E  
Gov't Lot 7  
Sec. 36



Lot	Owner	Area	Acres
1	Grandeur	1.17	.26
2	John W. Wagner	1.17	.26
3	John W. Wagner	1.17	.26
4	John W. Wagner	1.17	.26
5	John W. Wagner	1.17	.26
6	John W. Wagner	1.17	.26
7	John W. Wagner	1.17	.26
8	John W. Wagner	1.17	.26
9	John W. Wagner	1.17	.26
10	John W. Wagner	1.17	.26
11	John W. Wagner	1.17	.26
12	John W. Wagner	1.17	.26
13	John W. Wagner	1.17	.26
14	John W. Wagner	1.17	.26
15	John W. Wagner	1.17	.26
16	John W. Wagner	1.17	.26
17	John W. Wagner	1.17	.26
18	John W. Wagner	1.17	.26
19	John W. Wagner	1.17	.26
20	John W. Wagner	1.17	.26
21	John W. Wagner	1.17	.26
22	John W. Wagner	1.17	.26
23	John W. Wagner	1.17	.26
24	John W. Wagner	1.17	.26
25	John W. Wagner	1.17	.26
26	John W. Wagner	1.17	.26
27	John W. Wagner	1.17	.26
28	John W. Wagner	1.17	.26
29	John W. Wagner	1.17	.26
30	John W. Wagner	1.17	.26
31	John W. Wagner	1.17	.26
32	John W. Wagner	1.17	.26
33	John W. Wagner	1.17	.26
34	John W. Wagner	1.17	.26
35	John W. Wagner	1.17	.26
36	John W. Wagner	1.17	.26
37	John W. Wagner	1.17	.26
38	John W. Wagner	1.17	.26
39	John W. Wagner	1.17	.26
40	John W. Wagner	1.17	.26
41	John W. Wagner	1.17	.26
42	John W. Wagner	1.17	.26
43	John W. Wagner	1.17	.26
44	John W. Wagner	1.17	.26
45	John W. Wagner	1.17	.26
46	John W. Wagner	1.17	.26
47	John W. Wagner	1.17	.26
48	John W. Wagner	1.17	.26
49	John W. Wagner	1.17	.26
50	John W. Wagner	1.17	.26

W 1/2-NE Fract. 1/4  
Sec. 6

W 1/2-NE Fract. 1/4  
Sec. 6

W 1/2-NE Fract. 1/4  
Sec. 6

W 1/2-NE Fract. 1/4  
Sec. 6

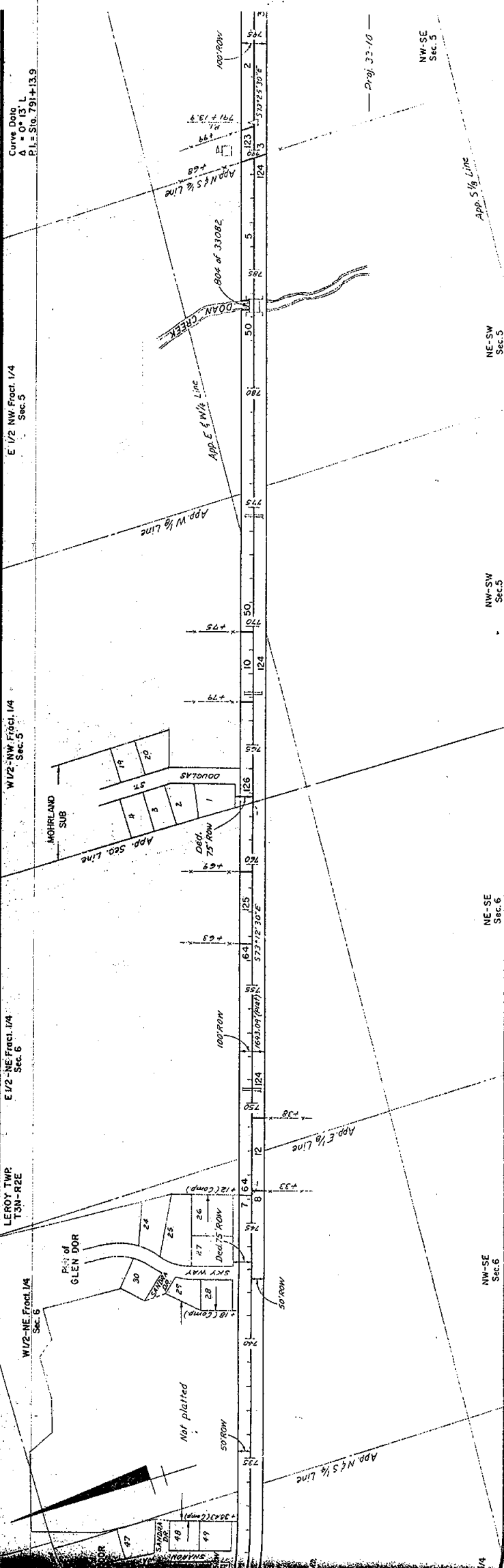
W 1/2-NE Fract. 1/4  
Sec. 6

W 1/2-NE Fract. 1/4  
Sec. 6

W 1/2-NE Fract. 1/4  
Sec. 6

W 1/2-NE Fract. 1/4  
Sec. 6

W 1/2-NE Fract. 1/4  
Sec. 6



W 1/2-NE Fract. 1/4  
Sec. 6

W 1/2-NE Fract. 1/4  
Sec. 6

W 1/2-NE Fract. 1/4  
Sec. 6

W 1/2-NE Fract. 1/4  
Sec. 6

W 1/2-NE Fract. 1/4  
Sec. 6

W 1/2-NE Fract. 1/4  
Sec. 6

W 1/2-NE Fract. 1/4  
Sec. 6

W 1/2-NE Fract. 1/4  
Sec. 6

W 1/2-NE Fract. 1/4  
Sec. 6

NE-SE Sec. 5  
NW-SW Sec. 5  
NE-SE Sec. 6  
NW-SW Sec. 6  
NE-SE Sec. 5  
NW-SW Sec. 5  
NE-SE Sec. 6  
NW-SW Sec. 6