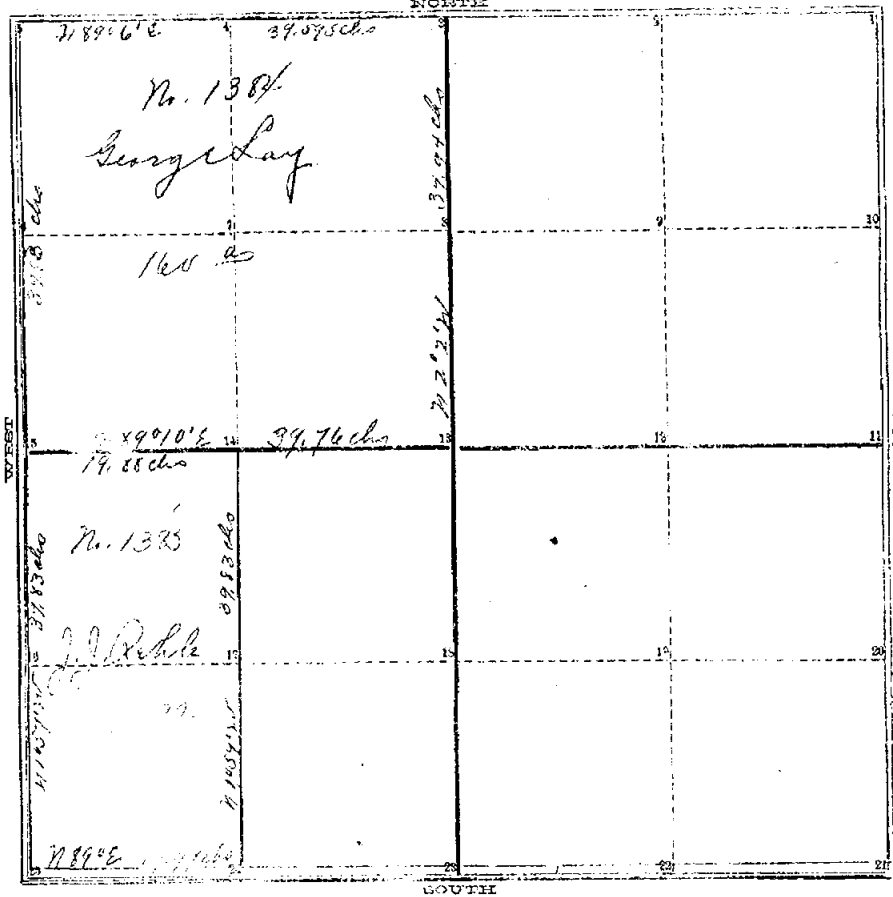


COUNTY SURVEYOR'S RECORD,

TOWN *Three* NORTH, RANGE *One East*, MERIDIAN OF MICHIGAN.

SEC. *9*



TOWN _____ NORTH, RANGE _____, MERIDIAN OF MICHIGAN.

- 1
- 2
- 3
- 4
- 5
- 6
- 7
- 8
- 9
- 10
- 11
- 12
- 13
- 14
- 15
- 16
- 17
- 18
- 19
- 20

24
25

INGHAM COUNTY, MICHIGAN.

TOWN Three NORTH, RANGE One East, MERIDIAN OF MICHIGAN.

Survey of the north west quarter and west half of the south west quarter of section No Nine of Township No Three North of Range No. One East, as represented by the accompanying plat (the scale of which is thirty chains to one inch); in which plat bearings and lengths of lines, letters of reference to lines and corners; the position of roads are respectively given.

The corners are described as follows:—

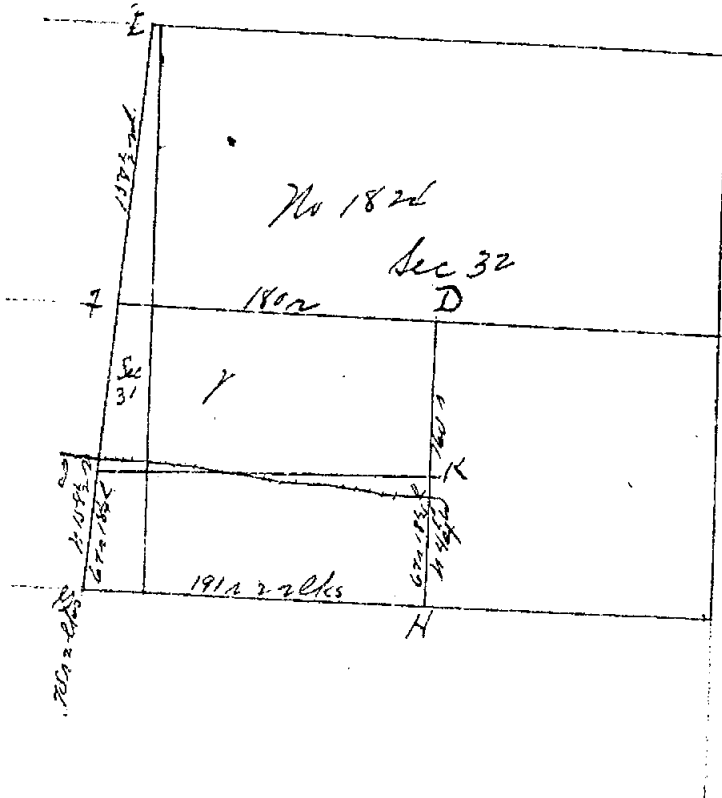
- (5) a stone mound ^{mark} the corner.
- (3) A stone from which a Beech 12 in. diam. bears S 27° W 62½ links
- (13) a post " " " N Oak 36 " " " S 30 W 4½ "
- " " " " " Juniper 6 " " " N 79 W 27¼ "
- (14) " " " " " N Oak 40 " " " N 15 W 5½ "
- " " " " " R Elm 12 " " " S 48 W 32 "
- (15) " " " " " Apple 8 " " " S 39 W 73½ "

(25) ^{Stone mound for corner}
(24) " " In center of highway No trees marked

Run by the True Meridian Variation 1° 55' East
Surveyed March 1st 1873, by T. J. Brown, Coroner, for Ingham Co., Mich.

COUNTY SURVEYOR'S RECORD,
TOWN *Free* NORTH, RANGE *One East*, MERIDIAN OF MICHIGAN.

Sections 31 and 32



Page 229, Vol. 3.

TOWN _____ NORTH, RANGE _____, MERIDIAN OF MICHIGAN.

E	D. Thom	57 31 E	62 lks	
F	Bitternut 4	S 15 1/2 E	140 "	24
G	Elm 12	70 1/2 W	162 "	
H	" 4	S 4 1/2 W	486 "	28
I	" 7	S 70 1/2 E	46 "	
J	Sugar 14	N 25 1/2 E	70 1/2 "	
K	Bitternut 3	N 71 W	7 1/2 "	
L	S.E. of house	S 38 E	9 1/2 "	
M	" " " "	S 69 W	97 "	
N	" " " "	N 75 3/4 W	102 1/2 "	
O	Elm 12 in	S 42 E	87 "	
P	Beech 12 "	S 44 W	8 "	
Q	" 16 "	S 28 E	14 "	
R	W. B. 8 "	N 82 1/2 W	852 "	Elm 6 S 73 E 40 lks.
S	B. Cherry 16 "	S 7 E	410 "	

- 9
- 10
- 11
- 12
- 13
- 14
- 15
- 16
- 17
- 18
- 19
- 20

INGHAM COUNTY, MICHIGAN.

TOWN. Four NORTH, RANGE. One East, MERIDIAN OF MICHIGAN.

Surveyed and Recorded by Var 0° June 13th 1894 by
Wm H. Rayner
Co Surveyor

Robt H. Rayner and Wm H. Rayner sworn claimants.

