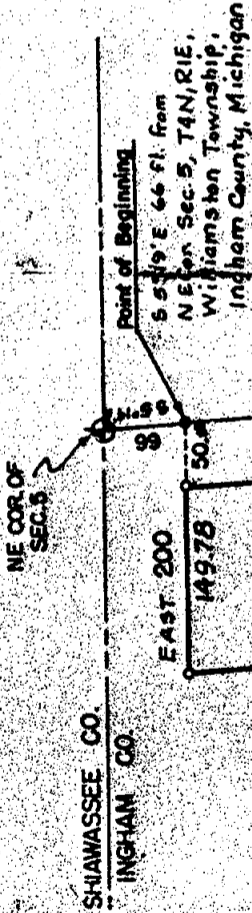


# DAR-LO

## FRACTIONAL A SUBDIVISION IN THE NE 1/4 OF SECTION 5, T4N, R1E, WILLIAMSTON TOWNSHIP, INGHAM COUNTY, MICHIGAN



SCALE: 1" = 100'



### APPROVAL BY COUNTY PLAT BOARD

This plat was approved on the 27th day of January, 1964, by the INGHAM County Plat Board

*Mrs. Belle Humphrey*  
Belle Humphrey (County Treasurer of Ingham)  
*W. R. Hill*  
W. R. Hill (County Clerk)  
*C. R. Hill*  
C. R. Hill (County Treasurer)  
*Harry V. Sperry*  
Harry V. Sperry (County Treasurer)  
*Gerald L. Graham*  
Gerald L. Graham (County Drain Commissioner)

### CERTIFICATE OF MUNICIPAL APPROVAL

This plat was approved by the Williamston Township Board of the Williamston Township, and is in compliance with Section 19a of a meeting held Dec 15, 1963, and that the width of lots conform with the requirements of Section 30, Act 172, of 1929, as amended.

### EXPLANATION

KNOW ALL MEN BY THESE PRESENTS, that we, Darrell R. Brown and wife, Lois M. Brown, Arthur Boroughs and wife, Mary Clare Boroughs, of Shoeman Rd. and 447 Barry Rd., Kalamazoo, Michigan, respectively,

do hereby certify that the land embraced in the annexed plat to be surveyed, laid out and platted, is known as PAR-LO, A Subdivision in the NE fractional 1/4 of Section 5, T4N R1E, Williamston Township, Ingham County, Michigan.

and that the Road as shown on said plat are hereby dedicated to the use of the public

Witness our hands and seals in the presence of Darrell R. Brown and Lois M. Brown, Darrell R. Brown, Lois M. Brown, Arthur Boroughs and Mary Clare Boroughs, Arthur Boroughs, Mary Clare Boroughs

### ACKNOWLEDGMENT

STATE OF INGHAM County of INGHAM

and that the width of lots conform with the requirements of Section 24, Act 174, of 1929, as amended.

*Glendora Bixby* Clerk

STATE OF MICHIGAN  
County of Ingham

On this 13th day of December 1964 before me, a Notary Public in and for said County, personally came the above named Darrell R. Brown and his wife Lois M. Brown; Arthur Boroughs and his wife Mary Clare Boroughs.

known to me to be the persons who executed the above dedication, and acknowledged the same to be their free act and deed.

*Frank H. Brown*  
Notary Public  
My Commission expires 10-31-65

**APPROVAL BY BOARD OF COUNTY ROAD COMMISSIONERS**

This plat has been examined and was approved on the 13th day of December, 1964, by the INGHAM County Board of Road Commissioners.

*C. E. Puffenberger* (Chairman)  
*K. O. Brown* (Member)  
*Phillip Mills* (Member)

**COUNTY TREASURER'S CERTIFICATE**

Office of County Treasurer, INGHAM County.

I hereby certify that there are no tax liens or taxes held by the State on the lands described herein, and that there are no tax liens or taxes held by individuals on said lands, for the five years preceding the 13th day of December, 1964; and that the taxes for said period of five years are all paid in full by the records of this office.

This certificate does not apply to taxes, if any, now in process of collection by township, city or village collecting officers.

*Harry A. Spenny* (County Treasurer)

**SURVEYOR'S CERTIFICATE**

I hereby certify that the plat herein delineated is a correct one and that permanent metal monuments consisting of bars not less than one-half inch in diameter and 36 inches in length, or shorter bars of not less than one-half inch in diameter leaped over each other at least 6 inches with an over-all length of not less than 36 inches, enclosed in a concrete cylinder of least 4 inches in diameter and 36 inches in length have been placed at precise marked true (0) as shown above at all angles in the boundaries of the land plotted, and of the intersections of streets, intersections of alleys, or of streets and alleys, and of the intersections of streets and alleys with the boundaries of the plat as shown on said plat.

*Max J. Payne*  
Surveyor  
My Commission Expires 10-31-65

**DESCRIPTION OF LAND PLATTED**

The land embraced in the annexed plat of DAR-LO, a Subdivision in the NE. 1/4 of Section 5, T4N, R1E, Williamston Township, Ingham County, Michigan.

is described as follows:

Beginning S 5°19' E 66 feet from the NE Corner of said Section 5, thence continuing along the East line of Section 5,

S 5°19' E 1561 feet;  
West 200.00 feet;  
N 5°19' W 920.00 feet;  
East 149.78 feet;  
N 5°19' W 66.00 feet;  
West 149.78 feet;  
N 5°19' W 575.00 feet and  
East 200.00 feet to point of beginning. Contains 9 lots numbered 1 through 9.

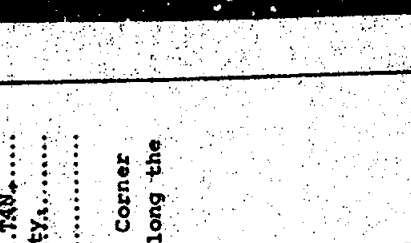
**DETAILED DESCRIPTION**

Plat of Dar-Lo

was filed in the City of Ing on Dec 13 1964

on P. 27

*Max J. Payne*  
Registered Professional Surveyor



NOTE:  
All dimensions are in feet and decimals thereof.

REGISTERED PROFESSIONAL SURVEYOR

Max J. Payne

My Commission Expires 10-31-65

By *Richard E. ...*  
Michigan E. ...

S 05° 21' 51" E  
3627.68

3851.757  
933.924

575  
66  
641

250  
325  
575  
41  
616  
175

375  
66  
441

3850.642  
740.124  
3850.898  
777.912

3851.952  
933.7395

3786.241 3786.046  
939.9096 940.091  
3786.046  
939.871

389° 58' 38" E  
200.00  
3786.162  
739.890  
3786.075  
889.871  
589° 58' 00" E  
150.00  
3147.832  
949.262

2998.409  
963.238

2849.205  
977.303

N 05° 13' 13" W  
150.01  
2699.816  
990.952

N 84° 38' 18" E

238.945  
1259.984

N 04° 52' 40" N  
N 05° 18' 10" W  
N 05° 21' 54" E  
N 05° 30' N

3000  
1000

50.55  
N 05° 18' 10" W  
299.88

50.49'

50.85'  
51.64'

S 05° 21' 54" E

89° 56' 36"  
240.161  
1272.877  
12.95

E 21' 42" E  
N 15' 12" S  
N 05° 30' N  
89.2298  
3627.68

174° 37' 15"