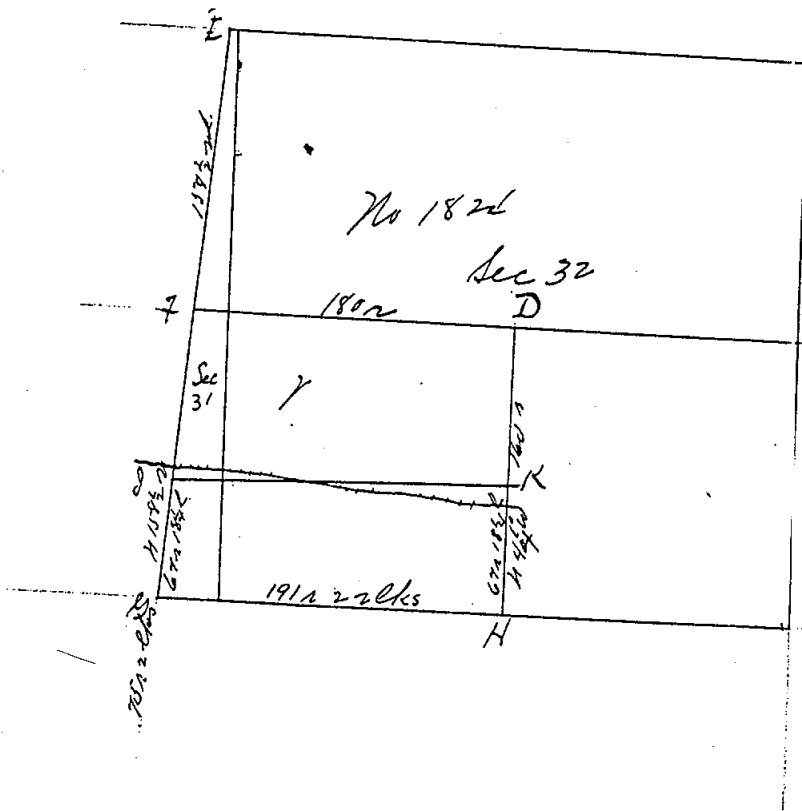


COUNTY SURVEYOR'S RECORD,
TOWN Five NORTH, RANGE One East, MERIDIAN OF MICHIGAN.

Sections 31 and 32



Page 229, Vol. 3.

TOWN _____ NORTH, RANGE _____, MERIDIAN OF MICHIGAN.

E	D. Thorne	5731 E	62 lks	
E	Bitternut	4 S 15 1/2 E	140 "	24
F	Elm 14	3 70 1/2 W	162 "	
F	"	5 4 1/2 W	484 "	25
D	"	5 76 1/2 E	46 "	
D	"	7 25 1/2 E	70 1/2 "	
K	Sugar 14	7 71 W	7 1/2 "	
K	Tellermund 3	5 38 E	9 1/2 "	
J	S.E. of House	5 69 W	97 "	
J	W. of " King	7 75 3/4 W	102 1/2 "	
G	Elm 12 in	5 42 E	87 "	
H	Beech 17 "	5 44 W	8 "	
H	"	5 28 E	14 "	
X	W. of 8 "	7 82 1/4 W	352 "	
X	B. Cherry 16 "	5 7 E	440 "	
				Elm 6 S 73 E 94 lks.

- 9
- 10
- 11
- 12
- 13
- 14
- 15
- 16
- 17
- 18
- 19
- 20

INGHAM COUNTY, MICHIGAN.

40

TOWN *Four* NORTH, RANGE *One East*, MERIDIAN OF MICHIGAN.

Surveyed and Recorded by Var 0° June 13th 14th 1894 by
W^m H. Rayner
Co Surveyor

Robt^{us} Rayner and W^m H. Rayner sworn claimants.